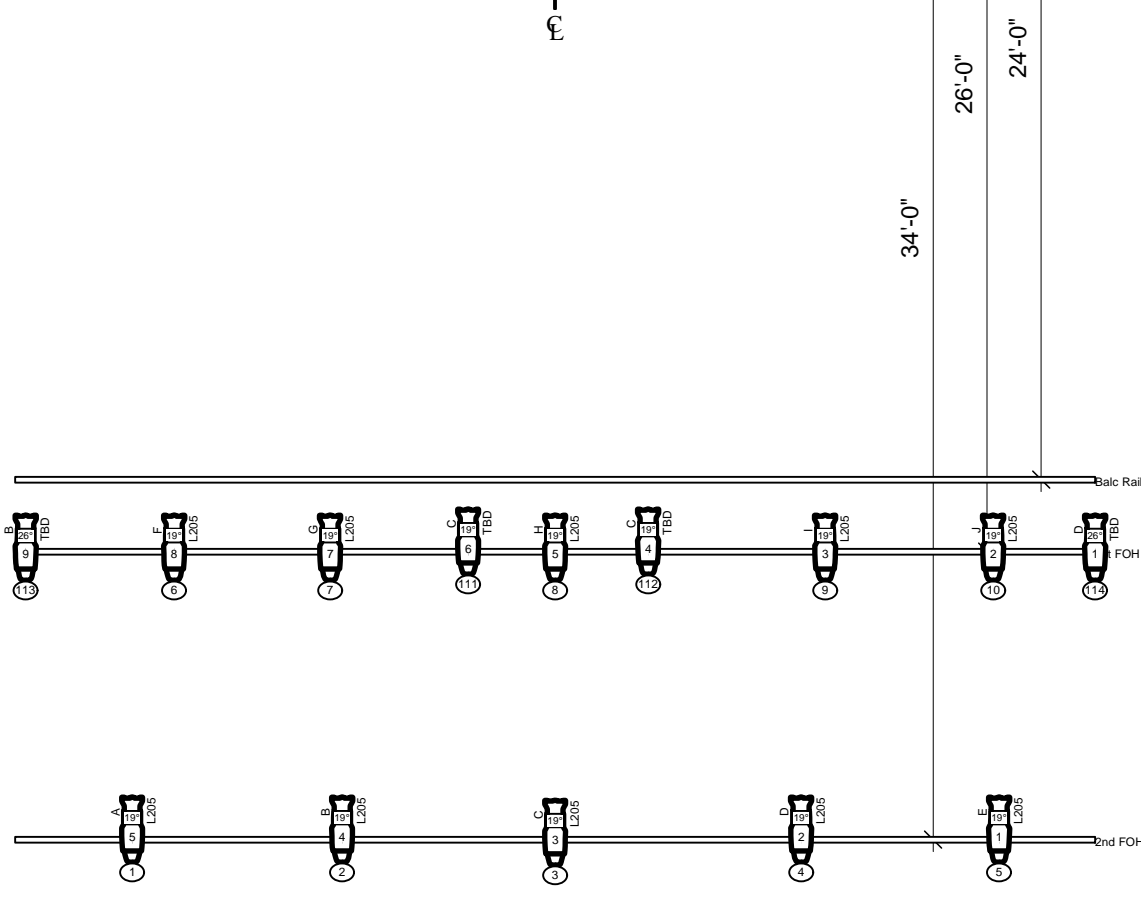


Box Booms:
 two colors
 Low, Mid, High
 Units can either be side by side
 or stacked on top of each other



Instruments	Used
Source 4 50deg	24
S4 PAR WFL	20
Source 4 19deg	12
Source 4 36deg	20
Source 4 26deg	6
3 Cell Sky Cyc	5
Accessories	Used
Color Fader	20
Floor Mount	12
Template	12
Footprint of space required for aerial apparatus	

Plot Notes:
This is a representation of a possible execution
 Instrumentation will change to meet venue inventory / dimensions.
 The following notes should assist in adapting to various venues.

Space drawn is necessary playing space - any masking legs should maintain the indicated opening.

Frontlight - Warm
Backlight - Faders are preferred (Morpheus M or Wybron CXI) if faders are unavailable, scrollers should include a red, blue, purple and orange. *If scrollers are unavailable instrumentation should be doubled to create a Cool & Warm*

These systems should cover the width of the stage in areas approx. 8-12' wide separated into:
 Apron, Wing 1, Rest of stage

Box Boom - Warm & Cool
 Coverage of Apron and Wing 1

Pipe Ends -
 Coverage separated SL & SR, Apron & Wing 1

Shins -
 DS units cover apron - degree spread will vary with width of apron
 Next units US cover wing 1
 Next 3 units US cover aerial rig
 US units cyc coverage.

Color and Patterns -
 Company does not travel with color or pattern - if you need to substitute, please check with designer.

Blacklight -
 Flexible instrumentation - Wildfire Spectra preferred.

Curtain Warmers -
 Per Venue

Show title: Eureka
 Draft by: J. Aufdem-Brinke
 Scale: Scale to fit
 Date: 27-Feb-09
 Contact: jbrinke@gmail.com (e) 301.442.2472 (c)